

# Publish Notes – Desktop Application

## Asgard Desktop Application v2.0.0.504



### Affected Workflows

Publish Notes – Desktop Application.....	1
Asgard Desktop Application v2.0.0.504 .....	1
Mobile Applications .....	2
AsgardMobile 1.0 – Current App .....	2
AsgardMobile 2.0.....	2
Desktop Application.....	2
Maintenance .....	2
Locations .....	3
Work Order Management.....	3
Billing.....	4
Cleans – In Beta.....	4

# Mobile Applications

## AsgardMobile 1.0 – Current App



### Maintenance – Various Fixes/Changes

Small enhancements and fixes to caching and queuing behavior, to improve performance under disconnected/unreliable connectivity states.

This version will require installation/update. Android version 2.1.23 (containing caching/queuing optimizations and a fix for a reported issue with UPC barcode scanning) and Apple version 2.1.23 (containing caching/queuing optimizations only) are available in their respective stores.

## AsgardMobile 2.0

We are continuing User Acceptance Testing, on the new app which introduces credential-based log-in (no IDs) and Work Order Search by Location to the field.

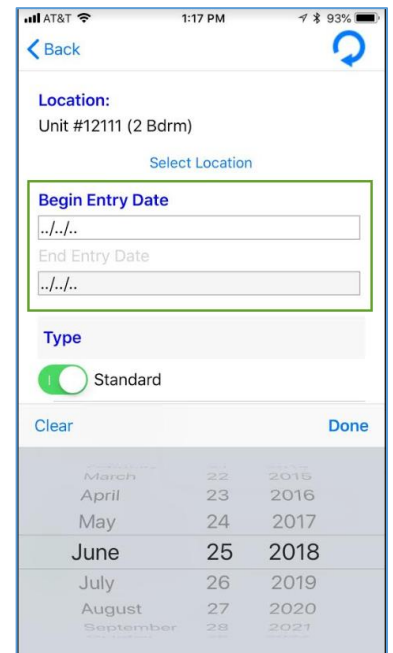


### Search by Location, Enhance to Include Entry Date Parameters

By customer request, we have enhanced the available search parameters to include Date.

### Work Order Detail Screen - Delayed

This publish, we prioritized the creation of a view-only Work Order Detail screen (which will be re-used in the coming user work order list, as well). Due to a larger-than-expected development/testing effort, we were only able to complete the back-end work to support the screen. The new screen will continue to be a top priority. When available, it will be a view-only precursor to the ability to perform standard work order edit and complete workflows.



# Desktop Application

## Maintenance

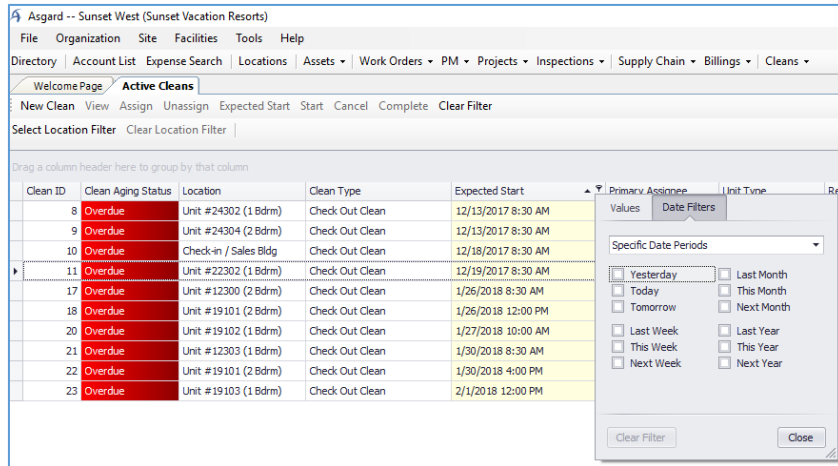
### Various Fixes / Changes

Small enhancements and fixes, in various areas of the system, arising from automated reporting of system performance and user experience reports. We have also moved the customer logo on the Welcome Page, to the right side of the screen for consistency with the branding in our analytics and aesthetic balance.

## “Grids” – Enhancements to Screens that Function like Excel

We are mid-stream on a long-term maintenance project to upgrade all “grids” throughout the system, to enable enhanced search, filter, and sort behavior for lists.

This sprint, the following additional Grids/Tools were updated:



- PM Groups
- User Notifications
- Billing Period List
- Inspection Skip Reasons
- Cleans – Recently Completed

Highlights of Enhancements with the new grid:

- Filters dynamically recognize and provide tools appropriate to the data type (see dates at left)
- Combine multiple filters
- Custom/Keyword search
- And much more!

## Work Order Management

### Inspections, Dashboards, Update Average Score by User

We have corrected an issue in which this counter was erroneously populating data based on Inspectee. It is now correctly populating by Inspector (Assigned User).

Average Inspection Template Score By User	
This Fiscal Year	Aldrich, Candace
1/1/2018 through 12/31/2018	
Name	Average Score
Credit Card Terminal Inspection - DLY	75.00%
ElWQ Quick Check	63.64%
Sprinklers	100.00%
Guest Suite Inspection	91.67%

### Recently Completed Screens, All Types, Add Work Order Count

By customer request, we have restored the convenience “counter” at the bottom of the Recently Completed screens to display the current count of work orders.

## Billing

### Work Order Billing by Unit Report, Include Request Details

We have enhanced the report, to ensure that Request Details are always included.

## Locations

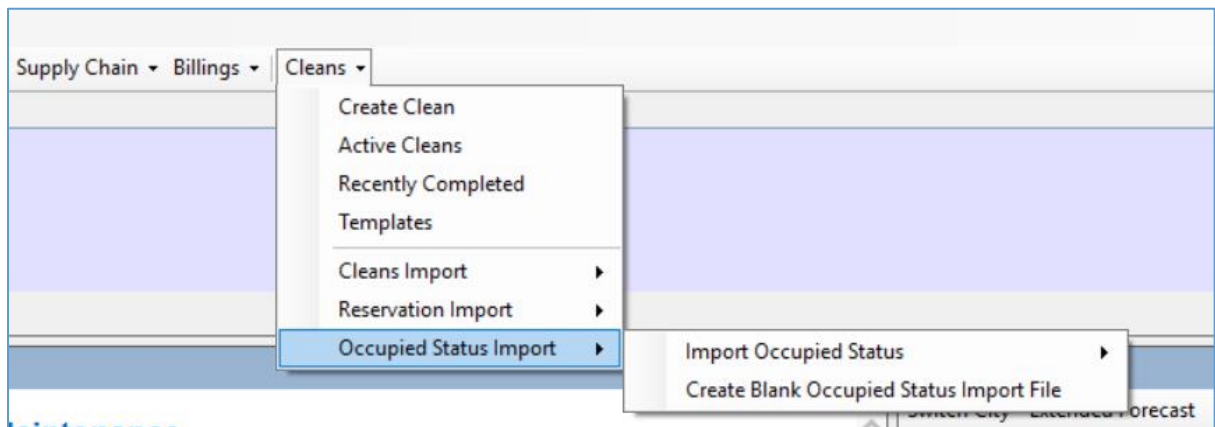
### Changes / Enhancements to handling of Occupied Status and Reservations

#### Ability to Import Reservation Information, with Excel

We have enhanced Occupied Status on Work Orders, including Standard, Inspection, and PMs to support a manual import from Excel. The new blank Import file, and the importer function, both exist on the Cleans and Locations menus.

#### Ability to Import Occupied Status Information, with Excel

We have enhanced Occupied Status on Work Orders, including Standard, Inspection, and PMs to support a manual import from Excel. The new blank import file, and the importer function, both exist on the Cleans and Locations menus.



## Cleans – In Beta



Among the numerous and varied responsibilities of the “back of the house” Resort Operations teams, arguably the most critical is the daily turnover from Occupied/Dirty units to Clean/Available Inventory. This process goes by many names, such as “Breaking Out the House,” “House Breakout,” and “Daily Cleans”. It generally always includes stripping and re-stocking the units, repairing maintenance issues, and cleaning and inspecting for guest arrival.

### Important Background

In previous updates, we published Cleans permissions, Create Cleans, Active Cleans, and Template/Type set-up, and Cleans Import functionality. There are five levels of access: No Access, View, Assignee, Manager, and Scheduling Manager.

For access at your organization, we must turn on specific flags on your account set-up. For questions or concerns, or to gain access to the Cleans import format, contact [support@katanasoft.com](mailto:support@katanasoft.com).

## Enhancements this sprint:

### Enhance Cleans Create

To support additional use cases for manual creation, we have enhanced this screen to include Expected Start Date/Time, Reported By, and Description.

The screenshot shows the 'Create Clean' form with the following fields:

- Location: (Select Location) dropdown
- Template: (Select Template) dropdown
- Expected Start: Date and time pickers
- Reported By: (Select Reporter) dropdown and text input
- Description: Large text area

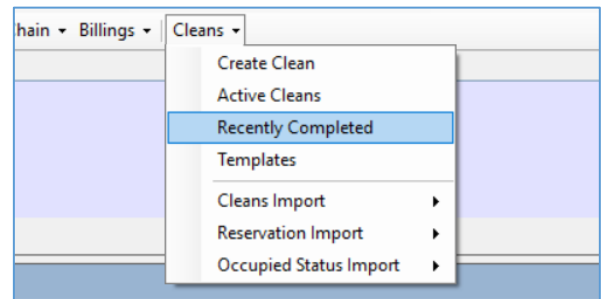
Note: When the Clean template contains a Description, any content added during creation (manual or import) will append to the end of the template Description.

### Recently Completed Screen

As planned on our features roadmap, we have added a Recently Completed Screen for reviewing Cleans that were completed within the last week.

From this screen, users can:

- View list of Cleans created up to 6 days prior, open to view details or return to Incomplete
- Group, Sort, and Filter results
- Export to Excel



The screenshot shows the 'Recently Completed Cleans' screen with the following table:

Clean ID	Location Path	Name	Clean Type
30	Unit #24205 (2 Bdrm)	Check Out Clean - 1BDRM	Check Out Clean
65	Unit #12211 (2 Bdrm)	Check Out Clean - 1BDRM	Check Out Clean
8	Unit #24302 (1 Bdrm)	Check Out Clean - 2 Bdrm	Check Out Clean
23	Unit #19103 (1 Bdrm)	Check Out Clean - 2 Bdrm	Check Out Clean