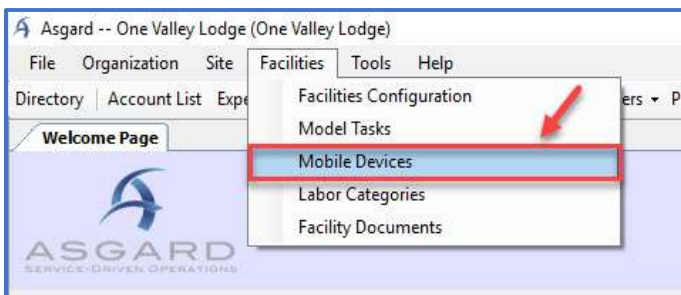


## AsgardMobile – Entering a Device ID

After the AsgardMobile Application is downloaded onto your mobile device, you will receive the notification: PLEASE ENTER DEVICE ID: \_\_\_\_\_ INTO THE ASGARD MAIN SYSTEM.

*The ability to enter the Device ID into the system is permissioned based. If you don't have this permission and think you should, please contact [support@katanasoft.com](mailto:support@katanasoft.com).*

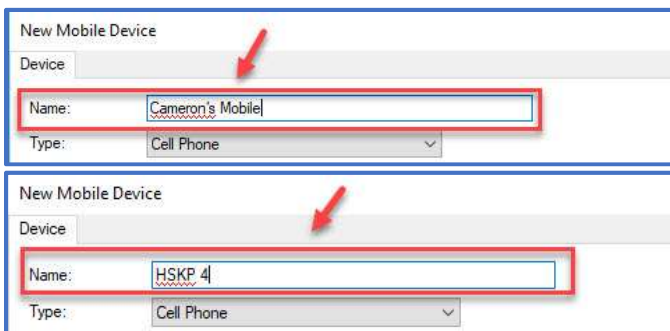
**Step 1:** Open the Facilities drop down and select Mobile Devices.



**Step 2:** In the Mobile Device List box, select New Device.

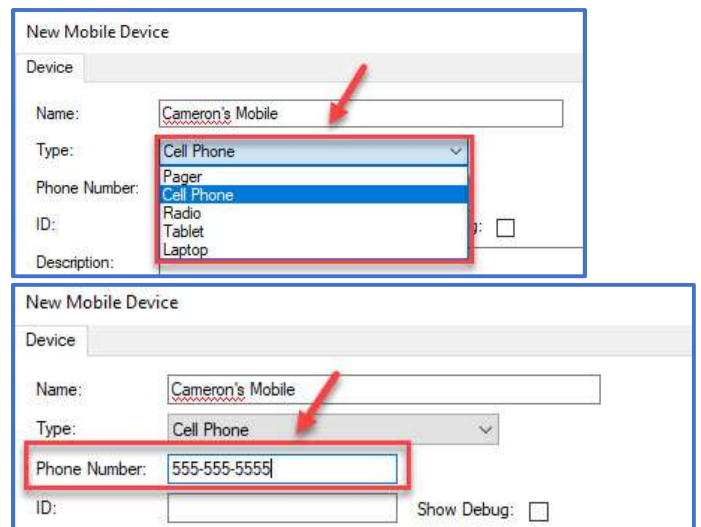


**Step 3:** Enter the Name of the New Device.



*Note: Use the name of the associate assigned the device, or if the device will be rotated between different associates you could name by department.*

**Step 4:** Select type and enter the phone number (optional).



**Step 5:** Enter the Device ID number assigned to you by AsgardMobile. Click okay, and that device is now in the system and ready to be assigned to a user in Staff On-Shift.

