

Publish Notes – Desktop Application & AsgardMobile



Desktop Application v2.0.0.492

Affected Workflows

| | |
|---|---|
| Publish Notes – Desktop Application & AsgardMobile..... | 1 |
| Desktop Application v2.0.0.492..... | 1 |
| Mobile Application..... | 2 |
| Desktop Application..... | 2 |
| Maintenance..... | 2 |
| Various Fixes / Changes..... | 2 |
| Optimization of Auto-Assign Algorithms..... | 2 |
| User Management..... | 2 |
| Log-In, Forced Password Change..... | 2 |
| Cleans – New Module Underway!..... | 3 |
| Standard Work Orders..... | 3 |
| Active/Follow-Up Screen, Prioritize/Sort Work Orders..... | 3 |
| Billings..... | 3 |
| Add Location Filter to Active Billings, Billing Search Screens..... | 3 |

Mobile Application

We are continuing the Xamarin AsgardMobile transition, and have added resources to our desktop team to ensure other needs continue to be well-supported.

We will continue to provide project progress updates through our regular customer Project Management meetings.



Xamarin Beta v1.0

Desktop Application

Maintenance

Various Fixes / Changes

Small enhancements and fixes, in various areas of the system, arising from automated reporting of system performance and user experience. Affected areas include Scenarios, Staff On-Shift, Follow-Up, and IVR Task Code.

Optimization of Auto-Assign Algorithms

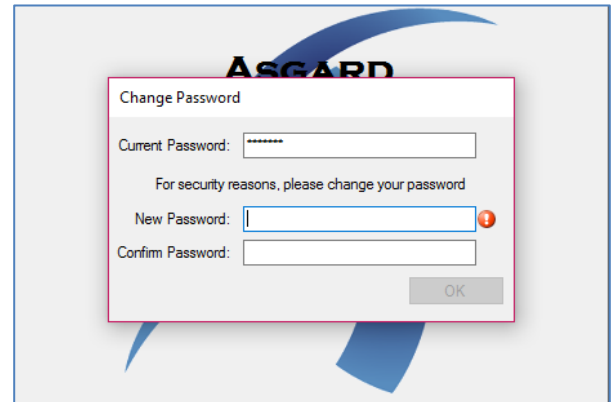
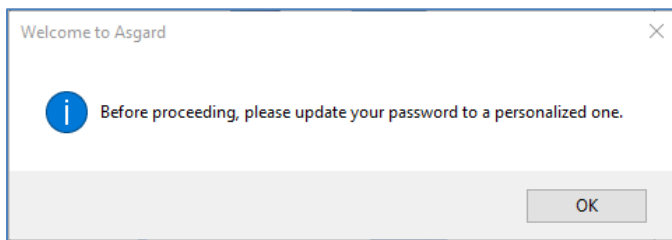
To support ongoing enhancements/performance to auto-assignment of work orders, we have optimized this area of the system for maximum efficiency.

User Management

Log-In, Forced Password Change

By customer request, we have enhanced this workflow to be more user-friendly.

At first log-in, users will now receive the following prompt to update their passwords:



Cleans – New Module Underway!



Among the numerous and varied responsibilities of the “back of the house” Resort Operations teams, arguably the most critical is the daily turnover from Occupied/Dirty units to Clean/Available Inventory. This process goes by many names, such as “Breaking Out the House,” “House Breakout,” and “Daily Cleans”. It generally always includes stripping and re-stocking the units, repairing maintenance issues, and cleaning and inspecting for guest arrival.

We have identified an opportunity to replace the legacy, homegrown or purchased, manual or software-based Housekeeping “Cleans” systems/functionality that our customers use today, and to integrate existing work order and billing concepts in Asgard.

With this publish, we are introducing new Permissions to support Cleans:

None

A user who does not have access to Cleans (e.g. Engineering/Maintenance Tech)

Assignee

A user who can be assigned to edit/complete a Clean (e.g. Houseperson, Cleaner)

Manager

A user who can perform all Assignee functions, as well as create, assign, and view reports for Cleans

Scheduling Manager

A user who can perform all Assignee and Manager functions, and reschedule Cleans

Additionally, we are introducing work behind-the-scenes, in anticipation of adding the Cleans creation capability in June.

You can learn more about our plans, and find distributable information, at <http://www.katanasoftware.com/housekeeping-cleans-new-module-coming-soon/>

Standard Work Orders

Active/Follow-Up Screen, Prioritize/Sort Work Orders

By customer request, we have enhanced the default order of the work orders listed in the Active/Follow-Up screen to sort by Aging, then Priority, then “Start At” (Expected Start) date.

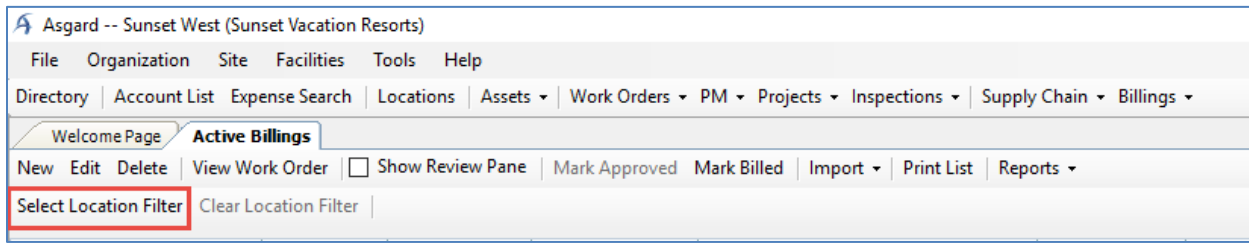
Billings

Add Location Filter to Active Billings, Billing Search Screens

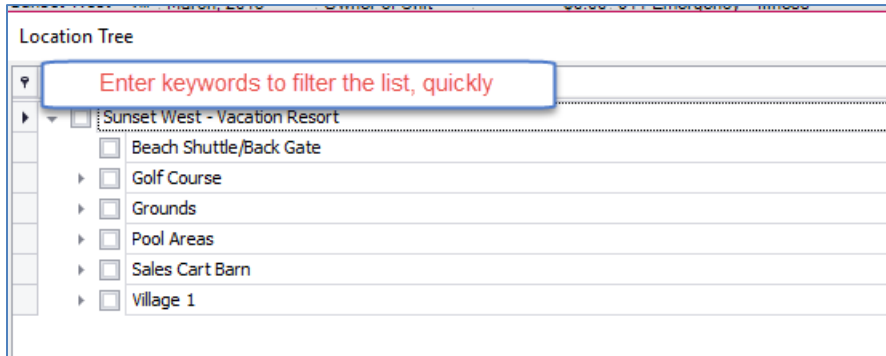
To support the workflow at large, multi-association/owner properties, that Bill for work, we have added a new convenience feature to the Active Billings and Billings Search screens. When in use, the filter will limit everything shown on screen to only the selected Locations.

Note: The Location Filter is also available on the Work Order Active/Follow-Up and Work Order Search screens.

To add a Location filter, Click Select Location Filter:



Then choose one or more locations from the selector tool, clicking the arrows to expand the options available:



If you select a “parent” location, such as Grounds, then all of its “children” (sub-locations) will also be included in the filter.

The filter will remain, even after you log-out/log-in to the system.

If you want to remove the filter, click Clear Location Filter:

