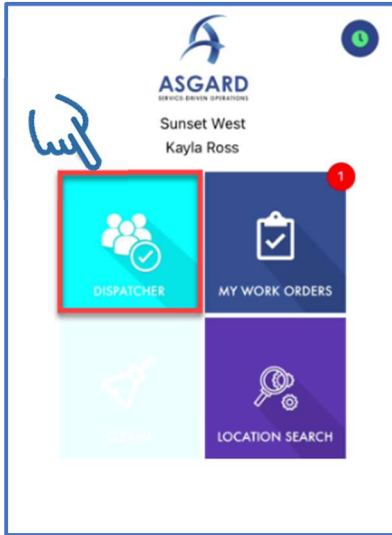


Navigating Dispatcher (Part 1) for iPhone

1. Tap Dispatcher



2. Work orders prioritized by Aging Status

Black banner
Rework status



Red banner
Overdue status



Yellow banner
Due status

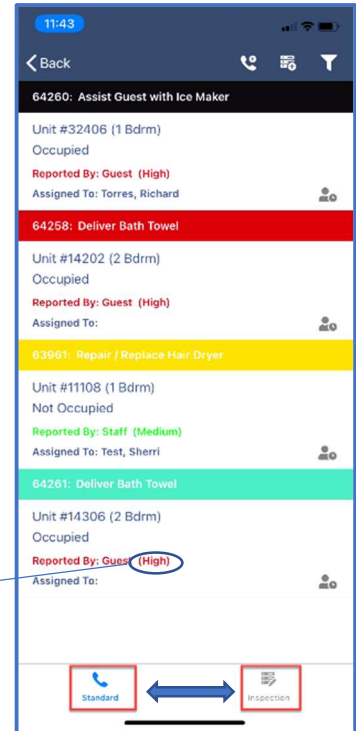


Green banner
OK status

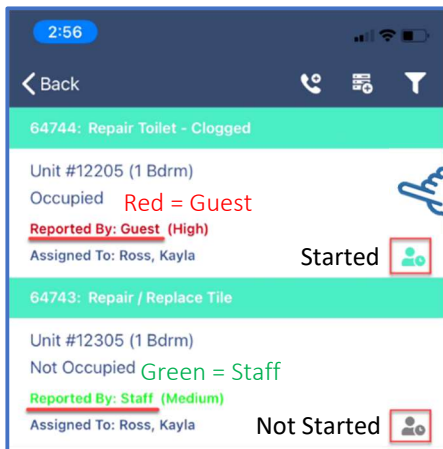


And by Priority

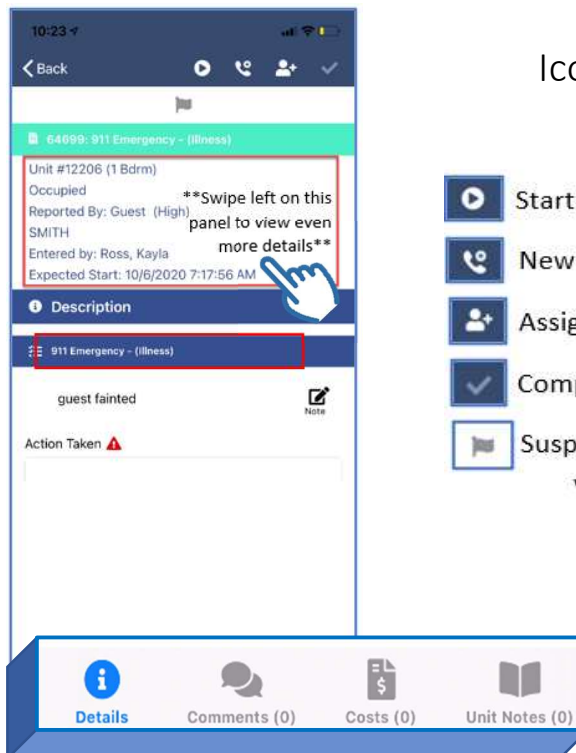
Priority:
Critical/High/Med/Lo



3. Tap work order to view details



- New Standard work order
- New Inspection work order
- Filter



Icon Definition

- Start a work order
- New standard work order
- Assign/Unassign work order
- Complete work order
- Suspend/Unsuspend work orders